



the schwartz center

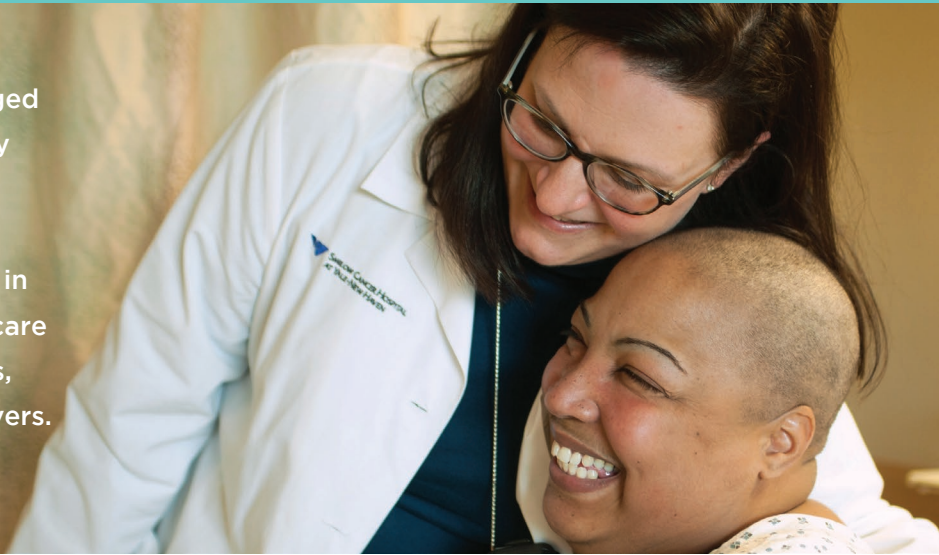
FOR COMPASSIONATE HEALTHCARE

When caregivers are compassionate, patients do better and caregivers rediscover their passion for healing. We are leading the movement to make **compassionate care a national priority**.

BECOME A HEALTHCARE MEMBER

The Schwartz Center's programs build engaged and resilient staff who relate more effectively to one another and to patients and families.

Join our more than 425 healthcare members in providing compassionate, patient-centered care and help your organization strengthen teams, improve communication and support caregivers.



ORGANIZATIONS THAT PRIORITIZE COMPASSIONATE CARE SEE:

Better patient outcomes	Greater patient loyalty	More qualified candidates
Shorter stays	Fewer costly procedures	Higher retention rates
Reduced costs	Lower readmission rates	Less staff turnover

Source: Schwartz Center and Harvard Community Action Partners White Paper, March 2015

“Something special and deep in our hearts and minds drove each of us to enter healthcare. That choice was at least partly derived from the quest for safe, compassionate care to those who entrust their lives to us. The Schwartz Center for Compassionate Healthcare is the angel on our shoulder helping us succeed in this important pathway.”

– Erik G. Wexler, CEO and Senior Vice President of Providence Health & Services, Southern California

The Schwartz Center's programs help:

- Support and engage staff
- Build stronger teams
- Increase caregiver satisfaction and resilience
- Improve authentic communication
- Create a culture of compassion

Among caregivers who attend multiple Schwartz Center Rounds sessions:

- 90%** report better **communication** with their co-workers
- 88%** report a greater sense of **teamwork**
- 88%** report an enhanced ability to meet **patients' emotional and social needs**
- 75%** report feeling **less isolated** in their work

Academic Medicine, June 2010

MEMBERSHIP BENEFITS

TRAINING AND SUPPORT

- Schwartz Rounds™ program – offers healthcare providers a regularly scheduled time during their fast-paced work lives to openly discuss the social and emotional issues they face in caring for patients and families.
- Orientation, training and ongoing support to successfully launch and conduct Schwartz Rounds
- Facilitation Workshops for Schwartz Rounds leaders
- Regular consultation visits and guidance from your personal Member Experience Advisor
- Office Hours webinars that answer member questions

EDUCATION

- Access to the *Compassion in Action* webinar series
- Discounts to Schwartz Center thought leadership events
- Access to Schwartz Center white papers that highlight the importance of compassionate healthcare
- Regular updates on advances and best practices in the delivery of compassionate, collaborative care
- Member discounts to *Modern Healthcare* conferences and forums and discounted subscription to *Modern Healthcare* magazine

COMMUNITY

- Discounts to the National Compassion in Action Conference with access to member-only sessions and recognition dinner
- Discounts to the National Compassionate Caregiver of the Year Award celebration
- Exclusive access to the Schwartz Center Healthcare Member Community website and resources

RECOGNITION

- Use of Schwartz Center distinctive member badge and logo
- Public recognition as a healthcare member committed to compassionate, collaborative care

SUPPORT YOUR CAREGIVERS JOIN THE MOVEMENT FOR COMPASSIONATE CARE

Initiation Fee

\$7,500

Annual Fee

\$2,700



“A compelling reason to offer Rounds is because **it’s for the caregivers – to support them, to feed their spirits, to touch their hearts, to give them a safe and brave place to discuss the most difficult and challenging cases** – since there’s typically no other place for those discussions to happen, especially not with people from the many and varied disciplines all meeting together as peers.”

– Rob A. Ruff, BCC,
Director of Chaplaincy Services
for Regions Hospital

* A site is a healthcare organization that conducts the Schwartz Rounds program. Each facility within a larger healthcare system that hosts the program is defined as a single site.

The initiation fee covers training, support and materials necessary to launch the Schwartz Rounds program and includes the first year annual fee. The annual fee is the ongoing yearly membership fee.