



# Touchpoints

November 2016

Issue #46

## Honoring the 2016 NCCY Award Finalists



Join us for our [21st Annual Kenneth B. Schwartz Compassionate Healthcare Dinner](#) on Nov. 15, 2016 in Boston for a night of celebrating compassion in healthcare. We will announce the 2016 National Compassionate Caregiver of the Year (NCCY) Award recipient and honor all of the [finalists](#), who were selected by a national review committee in collaboration with representatives from the **American Cancer**

**Society, the American Diabetes Association and the American Heart Association/American Stroke Association.** Each finalist has demonstrated extraordinary devotion and compassion in caring for patients, families and colleagues. Special thanks and gratitude to **Optum** and **Modern Healthcare**, sponsors of the NCCY Award.

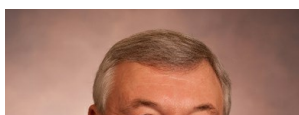


Help us reach our fundraising goal and join 2,000 of our supporters, including CEOs and senior leaders from hospitals, health plans, health-related associations, and biotech, pharmaceutical and device companies. Your support helps fund our vital programs nationwide. Learn about **sponsorship opportunities** for [individuals](#) and [organizations](#).

Seating for the dinner is limited and is on a first-come, first-served basis.

[Final chance to register](#) | [NCCY honorable mentions](#)

## Introducing our Dinner Chairs



We're excited to introduce you to a dinner chair in each newsletter issue leading up to the event.

### Save the Dates!

#### Annual Kenneth B. Schwartz Compassionate Healthcare Dinner

**Tuesday, Nov. 15, 2016**

Boston Convention & Exhibition Center  
415 Summer St.  
Boston, MA

[REGISTER NOW](#)

#### Compassion in Action Webinar

**Tuesday, Nov. 22, 2016**  
4:00-5:00 PM ET

“Conversations That Count: Improving Care for Patients with Serious Illness Through Engagement of Providers and Patients”

[REGISTER NOW](#)

#### Facilitation Workshops

**Friday, March 31, 2017**  
Detroit, MI

View the [details](#) for our 2017 session

[REGISTER NOW](#)

*Schwartz Center healthcare members only*

#### Annual Compassion in Action Healthcare Conference

**Sunday - Tuesday**



Meet Dinner Chair **Larry Renfro**, vice chairman of the UnitedHealth Group & CEO of Optum. He is inspired by our mission because, “The importance and power of compassionate care are immeasurable, and I have experienced its impact both personally and as a healthcare executive. It is part of the foundation of great care, and is what every patient deserves.

Extending the mission of compassionate care around the world will strengthen the special bond patients and caregivers share. I am honored to have the opportunity to support the Schwartz Center’s efforts to recognize caregivers who demonstrate compassionate care each and every day.” [Learn more and register for the dinner](#)

### Don't miss your chance to win!



For just \$20 our **Grab Bags** will get you a chance to win gift cards for local restaurants, sporting events, spas and more!

Here’s a sneak peek of what we’re offering at the dinner this year:

- Wine tasting for up to 20 people at Zorvino Vineyards
- Two tickets to a 2016-2017 Boston Philharmonic concert
- Mookie Betts autographed baseball
- Brad Marchand autographed puck
- Family portrait by Bradford Portraits, plus a luxury hotel stay in New York or Palm Beach

[See the full list](#) of contributing organizations.

### Volunteer for the Dinner



Our volunteers are an essential part of a successful and inspiring evening. [Review available positions and sign up!](#)

Volunteers will have an opportunity to win prizes for their participation and dinner is provided.

### Register for the Inaugural Compassion in Action Conference



Early bird registration is now open for our inaugural [Compassion in Action Healthcare Conference](#) taking place in Boston from June 25-27, 2017. Join a conversation with **Marc Lesser, MBA**, the CEO of Search Inside Yourself Leadership Institute, who helped develop one of the most popular employee training programs at **Google** about how emotional intelligence training can lead to improved teamwork and leadership performance. [Register](#) by Feb. 1, 2017 for the

early bird rate. Schwartz Center healthcare members receive a discounted rate.

June 25-27, 2017

Westin Copley Place  
10 Huntington Ave.  
Boston, MA

[REGISTER NOW](#)

### Join Our Team!

We’re seeking talented candidates to fill the following roles at the Schwartz Center:

- Director of Education and Training
- Communications Intern – Spring 2017
- Development and Events Intern – Spring 2017

[Learn more](#) about these opportunities!

### Your Gift Counts

Help support our programs in compassionate healthcare!

[DONATE](#)

### National Business Members

#### Chairman Circle

CRICO  
Optum

#### Executive Circle

Bank of America Merrill Lynch  
Blue Cross Blue Shield of Massachusetts  
CNA Insurance  
Harvard Pilgrim Health Care  
Massachusetts General Hospital  
Tufts Health Plan

#### Leader Circle

American Hospital Association  
Benchmark Senior Living  
Choate, Hall & Stewart LLP  
Delta Dental of Massachusetts  
Genesis HealthCare  
Integro Insurance Brokers  
Johnson & Johnson Innovation  
LAZ Healthcare Services  
MKA Executive Planners  
Novo Nordisk  
Partners HealthCare  
Tsoi/Kobus & Associates  
Vertex

[Learn more about becoming a business member](#)

#### Annual Dinner Donors - Organizations

#### Dinner Program Underwriter

CRICO  
Novo Nordisk  
Optum

#### Founder

Massachusetts General Hospital

#### Champion

Mintz, Levin, Cohn, Ferris, Glovsky, and Popeo, PC

## 2016 Boston Thought Leadership Breakfast



In October, we hosted an interesting and well-attended [2016 Boston Thought Leadership Breakfast](#), “**Telehealth and Compassion: Opportunities and Challenges to Improve Quality, Access and the**

**Caregiver-Patient Relationship.**” Telemedicine has seen tremendous growth and has become increasingly integrated into our healthcare system. Despite the growing popularity of these technologies, some still believe that telehealth will threaten the traditional patient-clinician relationship. A diverse panel including moderator Eric Schultz, president and CEO of Harvard Pilgrim Health Care, talked about how telemedicine can be used to both increase access to care and improve the patient-clinician relationship.

Discussion highlights:

- Telehealth allows better access to care by reducing the barrier of traveling to appointments and making visits more convenient. In addition to being seen remotely, clinicians can also be offsite, provided the technology is available.
- Clinicians can see patients in their home environment, which is not possible during a medical visit; thereby, increasing access and convenience for patients.
- Telehealth can also reduce costs by more frequent interaction with clinicians, reduce costs of time, travel and emergency room visits.
- Reimbursement for telehealth continues to evolve, but there are some bright spots in both the public and private sector that are serving as models for the future.
- These technologies can also improve clinician well-being and reduce burnout by improving outcomes/quality and the ease to interact with patients.

[View photos from the event](#)

## October's Top Facebook Posts



Here are the top three [Facebook](#) posts that resonated most with our followers last month:

1. [Meet Allissa Randazzo, BSN, RN, NCCY Award Finalist](#)
2. [Meet David Pascoe, MA, BCC, NCCY Award Finalist](#)
3. [A Letter to the Doctors and Nurses Who Cared for My Wife](#)

**Trustee**  
Tenet Healthcare  
Welltower

**Benefactor**  
Bristol-Myers Squibb  
CVS Health  
Finnegan, Henderson,  
Farabow, Garrett & Dunner,  
LLP  
Healthassist  
Lahey Health  
MedPro  
MGH Cancer Center  
Proskauer Rose LLP  
Ropes & Gray LLP  
Smilow Cancer Hospital at  
Yale-New Haven  
Stanley Healthcare

**Learn more about**  
[sponsorship opportunities](#)

Connect With Us



We Want Your Feedback

Help support our programs  
in compassionate  
healthcare!

**EMAIL US**

Share this email:



[Manage](#) your preferences | [Opt out](#) using TrueRemove™

Got this as a forward? [Sign up](#) to receive our future emails.

View this email [online](#).

100 Cambridge Street, Suite 2100  
Boston, MA | 02114 US

This email was sent to .  
*To continue receiving our emails, add us to your address book.*

