

the schwartz center
FOR COMPASSIONATE HEALTHCARE

TOUCHPOINTS

National Compassionate Caregivers of the Year® Award

Nominate a compassionate caregiver or team by **April 5, 2021**
theschwartzcenter.org/NCCY

Nominate a Compassionate Caregiver Today!

Nominations are now open for the National Compassionate Caregivers of the Year® (NCCY) Award, our national award program that **recognizes outstanding healthcare professionals** who display extraordinary devotion and compassion in caring for patients, families, and colleagues. This year we will recognize up to six individual caregivers or teams who embody our NCCY Areas of Impact.

The **deadline to nominate is April 5, 2021**. Nominate your caregiver or a colleague today and celebrate their commitment to compassion!

[Nominate Now](#)

[Subscribe](#) to our email list.

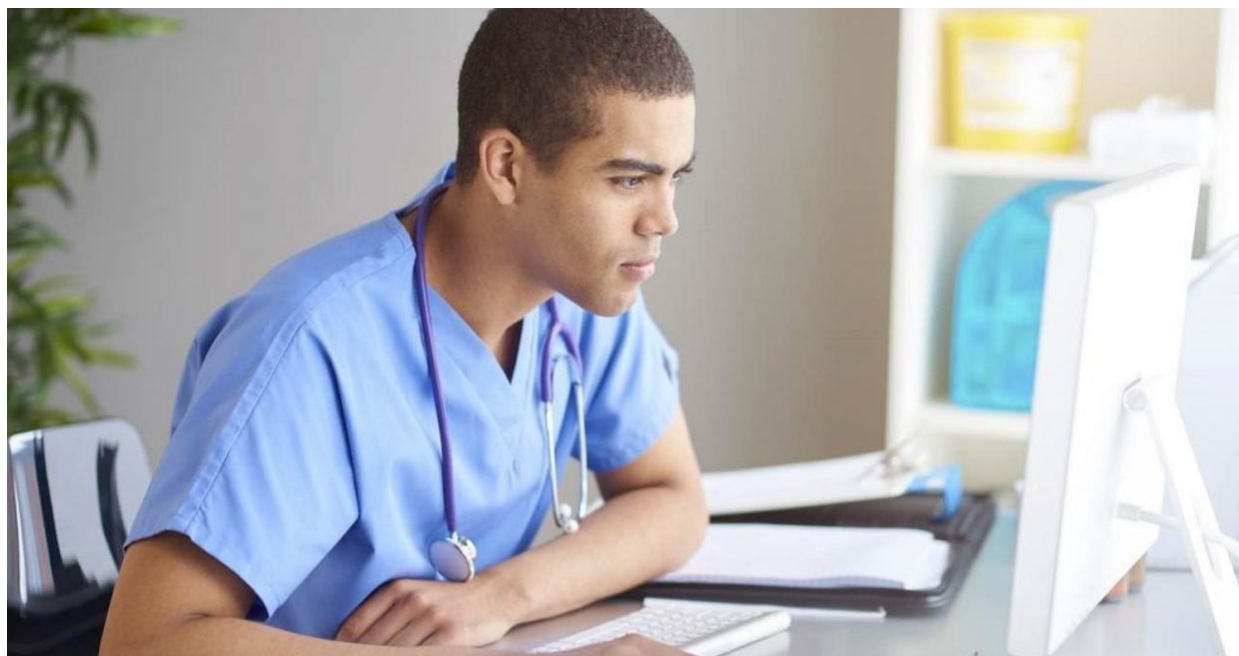


Watch Our Webinar: When Healthcare “Heroes” Need Help

This special panel discussion moderated by MSNBC’s **Chris Hayes** with **Corey and Jennifer Feist** of the Dr. Lorna Breen Heroes’ Foundation; **Jeremy Segall**, Chief Wellness Officer of NYC Health + Hospitals; **Dean Michelle Williams** of Harvard T.H. Chan School of Public Health; and Schwartz Center Chief Medical Officer **Dr. Beth Lown** explored the ways in which the pandemic has exacerbated a mental-health crisis for our healthcare workforce, and steps we can take to prevent, assess, and address the significant mental and behavioral health consequences of caregiving.

Watch a recording of this webinar, as well as all past Compassion in Action webinars, on our site.

[Watch the Webinar](#)



[Subscribe](#) to our email list.

New Schwartz Center Member Benefits

Over the last year, we have added new benefits and programming to support our healthcare members, particularly during this global health crisis:

- In partnership with national traumatic stress experts, we developed the [Stress First Aid](#) program to identify and mitigate the negative impacts of stress at work before they impair staff health and well-being.
- We developed guidelines for [Virtual Schwartz Rounds®](#) to transition our signature Schwartz Rounds program online to continue to support staff remotely.
- The **Schwartz Center Member Learning Center** is our new online home for member training and education. The courses are self-paced and allow busy caregivers to engage when it is most convenient for them.
- We launched **Community Connections webinars**, providing a monthly opportunity for our members around the world to connect with each other and with Schwartz Center staff about the work being done to advance compassion.

Schwartz Center membership is available to healthcare organizations in the U.S., Canada, Australia and New Zealand.

[Learn More About Membership](#)

In the News

In case you missed it, check out some recent media coverage of our programs:



- [Family Of N.Y. Doctor Who Died By Suicide Aims To Shed Light On Pandemic Mental Health Strain](#): Schwartz Center CMO Dr. Beth Lown and Corey Feist of the Dr. Lorna Breen Heroes' Foundation discuss the mental health crisis affecting healthcare workers, in an interview with Jim Braude of WGBH.



- [Bloomberg Business Radio](#): Schwartz Center CEO Matt Herndon and clinician Beth Milaszewski discuss the stress of being a frontline worker during the pandemic and how Schwartz Center programs can help with mental health issues.

Upcoming Events

[Subscribe](#) to our email list.



2021 Virtual Compassion in Action Conference

Starting June 15, 2021
Schedule coming soon!

[Learn More](#)

Top Social Posts from Last Month



[A retired music teacher fighting COVID-19 couldn't speak, but found another way to thank the nurses who were caring for him in the intensive care unit.](#)



[It's not bricks and mortar and equipment that make a hospital, it is the warmth and compassion and attitude of good employees that leads to quality care.](#)



[Schwartz Center CMO Dr. Beth Lown and Corey Feist of the Dr. Lorna Breen Heroes' Foundation discuss the mental health crisis affecting healthcare workers, in an interview with Jim Braude of WGBH.](#)

Connect With Us

You can help by supporting our programs that improve the mental health and well-being of healthcare professionals.

[Donate](#)

[Email Us](#)

[Subscribe](#) to our email list.



The Schwartz Center | theschwartzcenter.org | 100 Cambridge St. | Ste. 2100 | Boston | MA | 02114

Share this email:



Manage your preferences | **Opt out** using **TrueRemove™**

Got this as a forward? **Sign up** to receive our future emails.

View this email **online**.

100 Cambridge Street, Suite 2100
Boston, MA | 02114 US

This email was sent to .

To continue receiving our emails, add us to your address book.

emma[®]

[Subscribe](#) to our email list.